

BOEING AVIATION HANGAR

← EMIL BUEHLER Conservation Laboratory · Collections Processing Unit  
 · Collections Storage Facility · Archives

↑ VISITOR OVERLOOK  
 Cloud in a Bag Exhibit

↑ MARY BAKER ENGEN RESTORATION HANGAR

↑ VISITOR OVERLOOK

↑ JAMES S. McDONNELL SPACE HANGAR

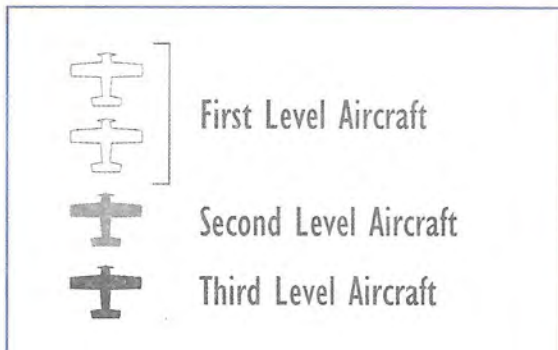


- ATM
- Elevator
- Food Service
- Gift Shop
- Restrooms
- Welcome Center
- Tour Desk / Information
- Simulators
- Stairs
- Theater
- Tickets
- Tower
- Emergency Exits

SMITHSONIAN National Air and Space Museum

Tour Desk / Information  
 Sponsored by the JOAN AND HERB  
 KELLEHER CHARITABLE FOUNDATION

Smithsonian  
 National Air and Space Museum  
 Steven F. Udvar-Hazy Center



HIGHLIGHTS

- Lockheed SR-71 Blackbird**  
Cold War Aviation
- Bell UH-1H Iroquois**  
Korea and Vietnam
- Langley Aerodrome A**  
Pre-1920 Aviation

HIGHLIGHTS

- Boeing B-29 Superfortress Enola Gay**  
World War II Aviation
- Boeing 307 Stratoliner Clipper Flying Cloud**  
Commercial Aviation
- Air France Concorde**  
Commercial Aviation

CLAUDE MOORE EDUCATION CENTER  
 LOWER LEVEL  
 SUSAN M. CARGILL CLASSROOM  
 LOWER LEVEL

AIRBUS IMAX THEATER  
 DONALD D. ENGEN OBSERVATION TOWER

ENTRANCE



**Address**

14390 Air and Space Museum Parkway  
 Chantilly, VA 20151  
 Telephone: 703-572-4118  
 Web site: [airandspace.si.edu](http://airandspace.si.edu)

**Hours**

Daily 10:00–5:30; closed Dec. 25.

**Admission**

Free.

**Parking**

Public parking is \$15; limited free bus parking.  
 Free after 4:00 p.m.

**Security Screening**

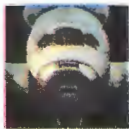
All bags and visitors will be screened. School groups are advised to leave all unnecessary belongings on the bus.

**Accessibility** 

Wheelchairs are available near the main entrance; a photo ID must be left with Security. The IMAX Theater is wheelchair accessible. Closed captioning and audio description are available for most films.

**HIGHLIGHTS**

A



**Space Shuttle *Discovery***  
*Human Spaceflight*

B



**Mobile Quarantine Facility**  
*Human Spaceflight*

C



**Mars Pathfinder Lander**  
*Space Science*

D



**Goddard Rocket**  
*Rocketry*

E



**Agena-B Upper Stage**  
*Applications*

**How do I get to the National Mall building?**

The National Mall building is about 28 miles (a 40-minute drive) away in downtown Washington. Public transportation is available via regional bus service or taxi; visit the Welcome Center for information.

**How do I find a name on the Wall of Honor?**

The Wall of Honor lines the walkway leading to the building entrance. To locate a name, consult a Visitor Services specialist at the Welcome Center, or visit the Wall of Honor web site at [airandspace.si.edu/wallof Honor](http://airandspace.si.edu/wallof Honor).

**How do I become a member?**

You can purchase individual or gift memberships at the Welcome Center or online at [airandspace.si.edu/membership](http://airandspace.si.edu/membership).

**What else should I know?**

No coat or luggage storage is available; only some small lockers. ATM machines are inside the Museum Store and next to the IMAX Theater box office. Public phones are across from the box office.

**Things To Do**

**Welcome Center**

Visitor Services volunteers can tell you about what to see and do and answer any questions you may have. Located just inside the main entrance.

**Observation Tower**

View airplanes landing at Washington Dulles International Airport, visit an exhibit on air traffic control. Take elevator from lower level.

**Guided Tours**

Free 90-minute highlights tours daily at 10:30 and 1:00. No tickets or reservations required. Tours begin at the Tours Desk on the lower level.

**IMAX® Films**

Large-format IMAX® films are shown daily. Visit the Theater box office just inside the main entrance for schedules and tickets.

**Demonstrations**

Look for Discovery Cart demonstrations and other unscheduled activities.

**Flight Simulator Rides**

Located in the Boeing Aviation Hangar just below the central overlook. Tickets are required.

**Food**

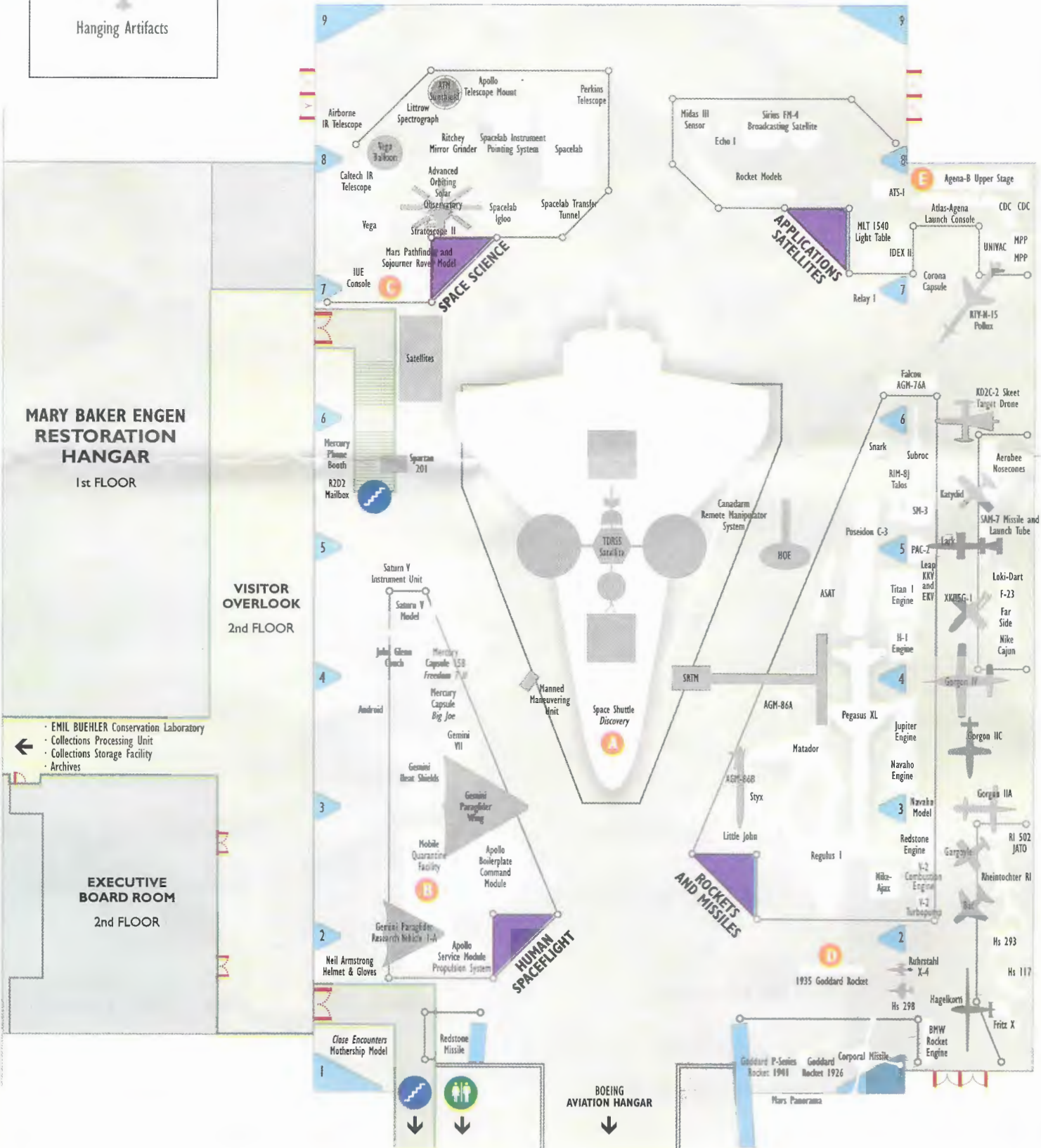
A McDonald's is near the main entrance next to the Museum Store.

**Shopping**

The Museum Store is near the main entrance.

SPACE HANGAR MAP

 Floor Level Artifacts  
 Hanging Artifacts



**MARY BAKER ENGEN RESTORATION HANGAR**  
1st FLOOR

**VISITOR OVERLOOK**  
2nd FLOOR

**EXECUTIVE BOARD ROOM**  
2nd FLOOR

- EMIL BUEHLER Conservation Laboratory
- Collections Processing Unit
- Collections Storage Facility
- Archives

**BOEING AVIATION HANGAR**